



Newsletter No 60 Autumn 2010

Inside this issue:

A Worrall Thompson Breeds at Risk Register	2
Tail Docking, Wedding News and Signet Update	3
Open Day	4
Stoneleigh Show and Sale	5
Gaerwen Show and Sale	6
Exeter Show and Sale	7
Around the Shows	8
Royal Welsh, Iolo Owen Points Prize	9

November 2010

Newsletter No 60
Autumn 2010

Dear Members

The Society has enjoyed another successful year with a busy show season and three show and sales. The new show and sale at Exeter was well supported with the location of the market proving popular. Reports on the sales are included in this newsletter as well as other items of interest.

You are reminded that registrations for this year's lambs must be received by **30th November**. Any registrations received after this date will be subject to a £50 fine, and registrations received after 31st December 2010 will be returned. Subscriptions are now overdue so if you have not yet paid please send your cheque by return so you may continue your membership of the Society and receive the 2010 flock book.

Gwen Elliott

Gwen died very peacefully aged 86 at the end of May. Older members will remember Gwen who was secretary, or joint secretary with her sister Mary, for many years until 1983. An extremely friendly and conscientious person, she had the interests of the Society very much at heart. When I took over from Gwen as secretary she could not have been more helpful. We have lost a good friend to the Society and our thoughts and best wishes go to her nephew Roger and the family.

Richard Thwaites

Annual General Meeting

The 2011 AGM was held at the Mytton and Mermaid Hotel near Shewsbury.

A minutes silence was held in memory of Miss Gwen Elliott.

This year Trevor Brown retired from the Council having been a key member of Council and the Society Treasurer for the past 5 years. Trevor oversaw the corporate governance review of the Society and was instrumental in the move towards incorporation. He was a popular member of Council and will be greatly missed. Council nomination forms were sent out to the membership in September with Jenny Grant-Parkes being the only member to come forward. Jenny was approved as a council member at the AGM and we welcome her to her new role.

The President DDL Davies and Vice President RT Ling remain in their posts for another year. Richard Ling has been in poor health this year but after surgery in September he is now on the road to a full recovery and we hope he will be able to enjoy his role as Vice President in the coming year. Teresa Hodgkinson was again voted as Chairman of the Council for the forthcoming year at the October council meeting.

Thank you to members who attended the AGM and to those who sent apologies.

The Taste of Wiltshire Horn Lamb Impresses top TV chef

Antony Worrall Thompson MOGB says....

“I’m impressed with the flavour of this darker fleshed lamb a great tasting lamb. I’m delighted to offer this at my restaurants.



Antony receives his supplies of Wiltshire Horn lambs from Lucy Fleming’s Bromsden flock in Henley on Thames. The Bromsden Flock 903 began in 2007 when Lucy Fleming bought 5 shearlings from Homington Flock 691 in order to tidy up the horse paddocks at her competition horse stud near Henley on Thames.

Bromsden Farm Stud is part of a 2000 acre family owned Estate near Henley on Thames, comprising a dairy herd, forestry and arable. With Mark Evers from Homington as invaluable mentor, the flock leases a high index ram each year in order to build up the flock, and this year tups 12 ewes. This breed of sheep was chosen on recommendation, the fact that they don’t need shearing was a big bonus, and that the sheep are hardy, easy to handle, and trouble free lambers with good mothering instincts.

Stud manager Linda Vincent, who is responsible for the day to day running of the flock reports a remarkable improvement in the condition of the horse paddocks, and as the farm is organic, the sheep do a good job as far as keeping internal parasites under control, rarely needing to worm the horses, relying on faecal egg counts and only worming when it is necessary. They are extremely fortunate in the Thames Valley area in having many local Gastro pubs, which means an enthusiastic market for their surplus organic lamb,

Breeds at Risk Register

The Breeds at Risk Register (BARR) is a register of holdings where recognized native breeds of sheep (or cattle, pigs or goats) are kept.

Inclusion on the Breeds at Risk Register is voluntary but means that any special measures prevailing in the event of a disease outbreak to conserve breeds at risk could apply to your premises, but does not guarantee that breeds at risk on the premises would necessarily be spared. Previously restricted to Foot and Mouth Disease, special measures may now also be extended to all notifiable diseases. Special measures would not however be applied to any non qualifying animals kept on the holding.

Keepers of Wiltshire Horn Sheep are eligible to register with the BARR provided that they are members of the WHSS and the minimum number of females has now been reduced from sixteen to one which allows all small flocks to register.

Members interested in registering their stock should telephone the RBST 024 7669 6551 or register online at rbst.org.uk/breedsatrisk.

Tail docking

Members are reminded that they need to observe correct procedures when docking lambs' tails.

The tail docking of sheep must be carried out in accordance with the "Code of Recommendations for the Welfare of Livestock – Sheep" which can be obtained through Animal Health offices or downloaded from the following link. <http://www.defra.gov.uk/foodfarm/farmanimal/welfare/onfarm/documents/sheep.pdf> Section 62/63 covers tail docking. Your local Animal Health office can give further guidance on this.

To comply with the law a sheep's tail must be of sufficient length to cover the anus of a male and the vulva of a female.

Animal Health officers visited shows this summer to inspect the tails of sheep exhibits. Depending on the severity of the breach of regulations, sheep owners who short dock their animals can have their payments under SPS reduced by between 1% and 100% of the overall payment due.



Wedding News

Ann Elliott and Edward Hull were married on 11th September at Kislingbury church, Kislingbury, Northampton. Congratulations and best wishes go to them both from us all at the Wiltshire Horn Sheep Society.

Signet Update

There are now 14 flocks nationally recording with Signet, most of which submitted scanning data this year. Data has been submitted annually now for four years on between 800-900 lambs from 430 (average 34 ewes/flock) or so ewes in total. This is more annually now than some other more commercial breeds including the Beltex. Importantly, all recorded Wilts flocks are moving forward and improving growth and carcass traits without compromising maternal traits. Linkage between recorded flocks has greatly improved as best rams have been exchanged/sold between flocks.

There will be no further funding to support ongoing recording for the SW flocks, but members are keen to continue with recording, including the scanning of lambs at 21 weeks for muscle and fat depth. Flocks wishing to start recording anywhere in the UK do however qualify for funding from the Society. Recorded flocks will continue to collect shedding data in order to develop a stand alone EBV for this important trait and contribute to the understanding of the genetics and heritability of shedding.

For further information about the recording programme please contact any of the participating members, details can be found on the Breed Enhancement page of the WHSS website, or contact Sam Boon of Signet on 01908 844 195.

Jean Burke



John Birchall addressing the visitors

The 2010 Society Open Day was held at Pilkington Farms, Hitchin, Herts on 20th June.

Our hosts for the day were Jon and Sarah Birchall and after the formalities of a short EGM Jon took the floor to talk about the reasons why he chooses to keep Wiltshire Horns and how they fit into his farming system.

Pilkington Farms is a mixed farm of 2250 acres managed by Jon Birchall under the ELS and HLS stewardship schemes. Having looked at other native breeds to graze the chalk grasslands of the farm Jon settled on keeping Longhorn cattle and Wiltshire Horn sheep. The Wiltshire Horn was chosen for its self shedding abilities and low maintenance attributes. Having previously keep mules which were lambed indoors Jon has been able to over winter his Wiltshire Horn flock in the field, lamb outside in April and maintain his previous lambing percentage with the benefit of less cost and less labour. Jon was keen to stress the quality and flavour of Wiltshire Horn lamb and the farm's successful award winning boxed meat scheme is testimony to this.

Jon was joined by Matt Perry a land advisor who works closely with him on the various environmental projects on the farm. Matt spoke of his admiration for the Wiltshire Horn and said he felt that large conservation grazers had yet to discover the advantage of using the Wiltshire Horn over primitive breeds. Whereas all qualify for payments under HLS the Wiltshire Horn has the advantage of delivering the premium of an excellent saleable carcass.

Jon and Matt enthusiasm for the breed was truly infectious and a lively question and answer session followed.

After a BBQ lunch of Pilkington Farm's own lamb, pork and beef burgers visitors were treated to a trailer ride around the farm to see the livestock. The first stop was to see the Wiltshire Horn ewe and lambs grazing with views over the Hertfordshire countryside then on to see the herds of Longhorn cattle and Middle White pigs.

A successful day finished with many visitors saying how enjoyable and informative they found the visit. Many visitors were new to the breed and three new members joined on the day.



Off on the Farm Tour

Our thanks go to Jon and Sarah Birchall for their hospitality and to everyone who attended our Open Day.

Teresa Hodgkinson

Judge W. Roberts, Anglesey

The 2010 Stoneleigh Show and Sale saw a record catalogue entry of 377 lots with around 300 forward on the day. There was strong competition in the show classes with large entries in the lamb and shearling classes.

First and second in the ewe lamb class were lambs from DDL Davies with Ruhi Hamilton taking the Ling cup for the group of three. A strong shearling ewe class was won by N & T Hodgkinson's ewe with DDL Davies' ewe in second place. N&T Hodgkinson's three year old ewe was awarded 1st place in the ewe class.

A good show of ram lambs saw Stuart Brodie in first place and VD Edwards from Anglesey in second with S Brodie then going on to win the group of three.

Another strong line up in the shearling ram class was headed by RG Elliott & Son with S Brodie in second place. RG Elliott and Son again taking the honours in the ram class.



Champion Ram S Brodie
Reserve RG Elliott & Son



Judging the Ram Lamb Class

Supreme Champion – Stuart Brodie's ram lamb

Reserve Male Champion- RG Elliott & Son's Shearling ram

Champion Female—N& T Hodgkinson's shearling ewe

Reserve Female Champion - DDL Davies' ewe lamb

N & T Hodgkinson took top honours in the females selling to 370gns for their Champion Female and 245gns for their senior ewe. Shearling ewes from J W Brigg sold to 255gns, while DDL Davies' 'Boxes Flock' sold several runs at 250gns. DDL Davies sold the '1st Prize Ewe Lamb' at 170gns while the 'Best Pen of 3 Ewe Lambs' from Ruhi Hamilton sold at 130gns each.

Stuart Brodie's champion ram lamb 'Brockhall Highwayman' sold at 600gns with others from the same pen selling to 380gns twice. A well grown ram lamb, 'Glasraig Elvis', from Mr W D Edwards of Anglesey topped the sale at 1,020gns selling to Messrs Wildgoose. R G Elliott & Son topped the 'Shearling Rams' with lot 321, 'Kislingbury Rufus', at 720gns, and went on to sell a senior ram lot 372, 'Lawford Zanadam', at 600gns.



Champion Female selling to 370gns

	Average	Top Price
Ewe Lambs	£117	£178
Shearling Ewes	£164	£388
Ewes	£118	£257
Ram Lambs	£287	£1071
Shearling Rams	£248	£756
Rams	£294	£630

Thanks go to our judge W Roberts and RFM and also to those members who worked hard behind the scenes getting stock up to the ring. There were some difficulties this year with the layout of the penning, rest assured the stewards will be working with the market towards improvements for the sale in 2011.

Teresa Hodgkinson Steward

Gaerwen Show & Sale

Monday 13th September 2010

Judge J W Brigg, Warwickshire



Judge JW Brigg pictured with
GM Edwards and his champion ram lamb

A smaller entry at Gaerwen than in recent years saw keen competition in the ram classes.

The ewe classes were first to be judged and saw entries from Owen Jones and Richard Owen, with Richard Owen taking first prize in the ewe lamb and ewe classes and Owen Jones taking the honours in the shearling ewe class. The ewe championship was awarded to Richard Owen's 2006 born ewe which went on to sell for 90gns.

The ram lamb class was won by a smart ram lamb Caer Goll Earl from GM Edwards with a well grown ram lamb from Owen Roberts in second place. A strong shearling class was headed up by RJ Thomas with his ram Cynfarwy Idris followed in second place by GM Edwards' Caer Goll Dan. The winning senior ram was Celyn Mac from B & H Thomas.

The Supreme Championship was awarded to the winning ram lamb from GM Edwards selling in the ring to judge JW Brigg for 240gns.

Top price on the day was 510gns for Tyddyn Mawr Xtra a ram lamb from Owen Roberts' flock which was second in his class, selling to JTJ Stone.

Despite a slow trade for females rams sold well with lambs and shearlings averaging £227 and rams £223.

Members in Anglesey have decided that they wish to move the sale to Ruthin Market in North Wales in 2011. It is hoped that this change of venue may result in more entries from English breeders as well as more buyers.



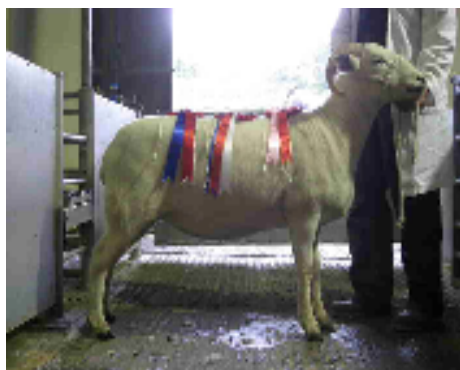
B & H Thomas' ram
Celyn Mac

Teresa Hodgkinson Steward

Exeter Show & Sale

Friday 15th October 2010

Judge S Brodie, Northamptonshire



Supreme Champion

Bred and Exhibited by Mrs A James

Exeter Market Auctioneers are very pleased to host the first Show and Sale of Wiltshire Horn sheep. A total entry of 101 Pedigree Wiltshire Horn sheep travelled from far and wide.

The Champion Ram on the day was a stand out Ram Lamb consigned by Mr C Morse from Carmarthen. The Ram Lamb sired by Cynfarwy Idwal had earlier finished 1st at Pembrokeshire County Show and 2nd at the Royal Welsh, and later went onto to be sold for 340 gns., being top price of the whole sale. Reserve Champion was a Shearling Ram from Mr G Inglesby of Barnstaple, sired by Lawford Yeoman he later sold for 240 gns.

A good entry of females sold to 250 gns. for the Female Champion and Overall Show Champion, a Shearling bred by Mrs A James of Haverfordwest, she was sired by Carreg Narbeth. Ewe Lambs sold to 78 gns. for a pen for Mrs Jean Burke of Truro and Older Ewes sold to 85 gns, for a pen from Messrs N & M Ashwin of Bristol.

Sale Results as follows :-

16	Ewe Lambs to £81.90	Average £72.45
38	Shearling Ewes to £262.50	Average £125.82
26	Older Ewes to £89.25	Average £81.79
13	Ram Lambs to £357.00	Average £169.50
8	Shearling Rams to £252.00	Average £118.13



Champion Male

Bred and Exhibited by C Morse

<u>Champion Ewe</u>	429/668/09	Mrs A James, Haverfordwest
<u>Reserve Champion Ewe</u>	789/26/07	Mrs C White, Sidmouth
<u>Champion Ram</u>	966/5/10	Mr C Morse, Carmarthen
<u>Reserve Champion Ram</u>	967/10/09	Mr G Ingleby, Barnstaple
<u>Supreme Champion</u> (for the Ling Cup)	429/668/09	Mrs A James, Haverfordwest
<u>Best Opposite Sex to Champion</u> (for Boxes Cup)	966/5/10	Mr C Morse, Carmarthen

Exeter Livestock Market



New Forest Show

New Wiltshire Horn classes were arranged at Stithians show in Cornwall and the North Devon Show. Only the North Devon show was able to go ahead and, as it is unlikely that we could guarantee enough interest in Stithians show next year, we will not be asking for classes again. We expect to hold classes again at North Devon but this will only be possible if members from the South West are willing to support the show classes by entering in 2011.



Anglesey Show

Champion WD Edwards (ram)

Reserve Champion RJ Thomas (ewe)

Wiltshire Horn classes at the Royal Bath and West were held on the Saturday this year although there was sufficient entries for the classes to take place only 2 exhibitors showed on the day it is therefore regrettable that it is unlikely that the classes can continue.



Shows in other parts of the country have been well attended with large entries at The Royal Welsh, Anglesey, Bucks County and Blakesley show. We were fortunate to regain our show classes at the New Forest and providing there are sufficient entries Wiltshire Horn breed classes will be held again next year. Mike Newell's sheep were pictured on the cover of this year's livestock catalogue.



Hey get off! – Stoneleigh

Joshua Brigg has canvassed enough support from local members to ask Kenilworth show for Wiltshire Horn classes in 2011. It is hoped that this show could go some way to filling the void the Royal has left in this part of the country. Simon Draper of Rugby Farmers Mart has kindly agreed to sponsor the classes.



Richard and Lucy Jeyes at Evesham

Dates for all show will be published on the Society website early next year as soon as they are available. Members are reminded that closing dates for most shows are between 4 and 6 weeks before shows. Check with the show societies for further details.

Full results of all shows will be published in the 2010 flock book.



A wet day at Tivyside Show



R J Thomas receiving the cup
for Supreme Champion

Unfortunately Veronica Brigg had an accident two days before the show rendering her unable to judge the Wiltshire Horn classes. As there was insufficient time to go through the normal procedure of inviting the breed society to recommend a replacement and then organising a stand-in at such short notice, the Chief Sheep Steward asked me to step in as I was already there to judge the Oxford Down classes in the morning.

The first class, Senior Rams, had six forward. All good sheep but some let down by their mouths. Ten Shearling Rams made a great sight as they were a level class of excellent quality sheep with no "tail end" and produced both the Male and Reserve Male Champions. In the last of the male classes, Ram Lambs, the eight forward spanned four months, being born from January to April. I made allowance for this, placing the youngest second to the oldest.



Reserve Champion Bred and Exhibited
by WD Edwards

Two strong female classes each had ten entries forward. Shearling ewes were headed by my eventual Female and Breed Champion. The star of the show with tremendous length, presence, breed character and, in particular, a true Wiltshire coat which we must all endeavour to retain. A good class of ewe lambs produced the Reserve Female Champion.

Joshua Brigg Judge

The Iolo Owen points prize

The Iolo Owen Points Trophy is awarded to the member who has gained the most points at shows with Wiltshire Horn Breed classes. This year it has been awarded to Jenny Grant-Parkes for the third year running. In second place was RG Elliott and Son and in third RJ Thomas.

£25 Reward

The following members have received awards for winning championships at shows without Wiltshire Horn breed classes.

J W BRIGG - Any Other Breed Female Championship at Monmouthshire Show

N & T HODGKINSON - Shortwool and Non Primitive Champion at Heckington Show

L A ROLLASON - Traditional Breed and Interbreed Champion at Egham Royal Show

D & T WILLIAMS - Any Other Pure Native Breed Ashby de la Zouch

Society Show and Sales 2011

Make a note in your diaries now of the show and sale dates for next year.

Ruthin

Thursday 8th September 2011

Stoneleigh

Saturday 17th September 2011

Exeter

Friday 7th October 2011



2010 Flock Book

The 2010 Flock book published and sent out to the membership in February.

Why not advertise your flock

Full page advert £60

Half page advert £30

Email or post your details to the Secretary by 31st December for inclusion in the 2010 Flock Book.

Wiltshire Horn Sheep Society Ltd

Christina Cormack
Stickle Heaton Farm
Cornhill on Tweed
Northumberland
TD12 4XG

Phone: 0844 800 1029

Fax: 01270 627505

E-mail:

info@wiltshirehorn.org.uk

www.wiltshirehorn.org.uk



The Society would like to wish all its members and friends a very Merry Christmas and a Happy New Year

